



Our River. Our Future.

Revitalising kanamaluka/Tamar estuary

March 2024 Construction Update

This new pipeline project is one of the largest infrastructure projects of its type in the southern hemisphere. It is designed to increase our capacity to transfer sewage and stormwater, significantly reducing the frequency and volume of overflow events which will improve the health of kanamaluka/Tamar estuary and the environment that surrounds it.

Pipeline Works Update

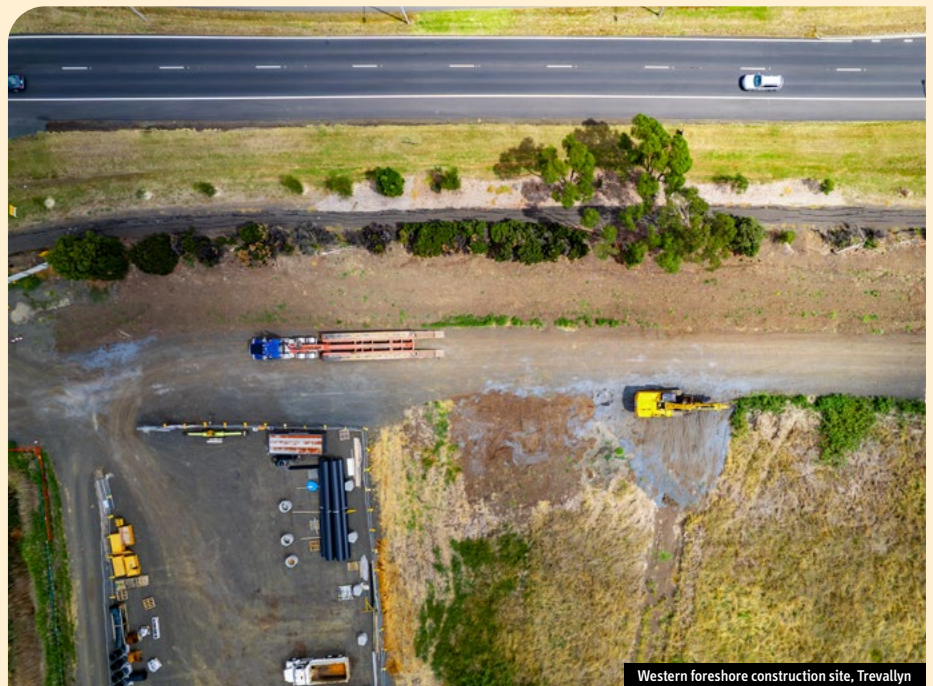
Between late 2023 and January 2024, we reached significant milestones in the construction of the new pipeline.

We successfully completed the first of two river crossings using a construction method known as Horizontal Directional Drilling (HDD). A 650 metre long section of pipe was installed 40 metres below the riverbed between our Ti-Tree Bend Sewage Treatment Plant and our site at Valley Street in Trevallyn.

At the Margaret Street Pump Station, in preparation for our second river crossing, we have tunnelled 65 metres of large diameter steel casing into the bedrock beneath the estuary. This will house the new pipeline, which will connect our Margaret Street Pump Station under the riverbed to the western foreshore in Trevallyn. A section of buried pipeline will then connect the two river crossings.

Reaching these key milestones also means we have now completed our noisy 'hammering' works and we thank the local community for their understanding as we completed these works.

To help keep the local community informed we have installed some project interpretive signage, keep an eye out for this if you happen to be



Western foreshore construction site, Trevallyn

walking along Richie's Mill Walk in Launceston or enjoying Tailrace Park in Trevallyn.

Upcoming Pipeline Works

Between March and April 2024, we will continue drilling the tunnel for the second river crossing and gradually feed the new pipeline through the steel casing we have installed under the riverbed.

Works will also continue along the western foreshore area in Trevallyn, where we are continuing to install flow valves for the 600 metres of new pipeline we are laying into the trench we've excavated.

Most of our construction works will take place from 7am to 5pm Monday to Friday and 8am to 5pm weekends. The timing of our works may change depending on weather and site conditions. Some works may need to be undertaken out of hours. If this happens near you, we'll let you know in advance.



Drilling works

Once this project is completed, the pipeline will be able to transfer up to 900 litres per second of combined stormwater and sewage flows from the Margaret Street Pump Station along the Western foreshore and across to the Ti-Tree Bend Sewage Treatment Plant.

Major construction on the pipeline is planned to be completed by late 2024.



Our construction site at Kings Park

Other Launceston Combined Sewer and Stormwater project news

New Margaret Street Pump Station Upgrade

Works to upgrade this pump station are progressing well. The upgrades will allow us to better pump the combined sewer and stormwater through the new sewer pipeline.

We have now installed a new monorail system to cater for the larger pumps that will pump the equivalent of 11,000 toilet flushes a minute.

New Sewer Main

We recently completed works in a car park next to our Margaret Street Pump Station installing a new sewer main that will divert flows from the surrounding area into the New Margaret Street Pump Station.



Excavations for new sewer main

Ti-Tree Bend Sewage Treatment Plant Upgrade

Works are underway preparing for our ground improvement works. This involves relocating existing services and the excavation of 12,000 tonnes of materials to make way for the new 10 Megalitre storage tank we will build later this year.

The new storage tank is designed to manage the increased flows to this facility.

New artwork

To minimise the noise coming from our Margaret Street Pump Station construction site, we have installed double stacked shipping containers to act as noise barriers.

The containers provided us with the ideal opportunity to add a bit of colour to the local landscape by installing vibrant artwork banners, we were delighted to collaborate with local artist Ben Miller in the design of the banners.